

QUARTER FENDERS



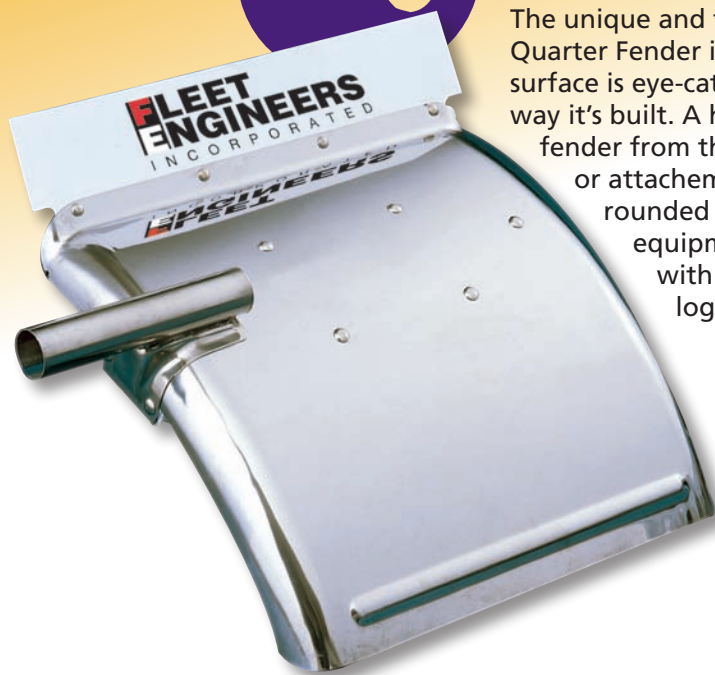
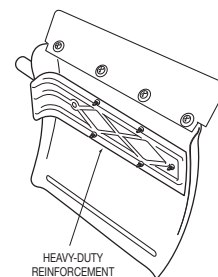
**FLEET
ENGINEERS**
INCORPORATED

The best in the business.

Fleet Engineers' Quarter Fenders are the most attractive and durable fenders available anywhere.

Metal "Air Slipper" and "Air Slipper" Combo

The unique and functional design of the patented "Air Slipper" Quarter Fender is in a class of its' own. The smooth, curved surface is eye-catching but the real beauty of this fender is the way it's built. A heavy-duty reinforcement plate supports the fender from the underside so there are no braces, brackets or attachments to detract from the appearance. Plus, the rounded side flanges reduces spray which helps keep equipment cleaner. The "Air Slipper" Combo comes with white top flaps featuring the Fleet Engineers' logo and flap hardware.



Air Slipper - without Top Flaps

| part no. | weight (lbs.) | construction | top flap hdw. |
|-----------|---------------|-----------------------------|---------------|
| 031-00400 | 31.80 | 18 gauge black primed steel | - |
| 031-00402 | 33.20 | 18 gauge polished s.s. | - |
| 031-00404 | 23.90 | 16 gauge aluminum | - |

Air Slipper Combo - with Fleet Engineers Top Flaps

| | | | |
|-----------|-------|-----------------------------|---------------|
| 031-00747 | 34.40 | 18 gauge polished s.s. | s.s. hardware |
| 031-00921 | 33.00 | 18 gauge black primed steel | zinc hardware |
| 031-00923 | 25.10 | 16 gauge aluminum | zinc hardware |

details

- Each fender set includes one right and one left fender assembly with hanger clamps and all installation hardware plus white top flaps with the red and black Fleet Engineers logo and top flap hardware.
- "Air Slipper" is a full 24" x 24" fender size; The STANDARD (right) is a larger 29" x 24" fender size
- Universal fitting
- Each fender is pre-assembled for speedy installation



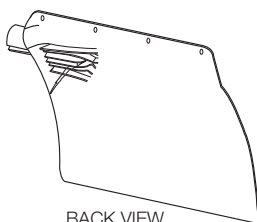
Metal "Air Slipper" with Triangle Mount

The great look of the traditional stainless steel "Air Slipper" Quarter Fender but with a Triangle Tube Mount. The Triangle Mount design requires no cradles or braces and the hidden mounting bolts create a clean, uncluttered appearance. The "Air Slipper" with Triangle Mount comes with white top flaps featuring the Fleet Engineers' logo and all flap hardware.

| part no. | weight (lbs.) | construction | top flap hardware |
|-----------|---------------|------------------------|-------------------|
| 031-00419 | 29.04 | 18 gauge polished s.s. | stainless steel |

"Air Slipper TWO" and "Air Slipper TWO" Combo

The black plastic "Air Slipper" had been one of the most popular fenders for over 20 years. So what do we do? We redesign it! The **"Air Slipper Two"** is now tougher and more attractive than ever! The front of this fender may look familiar with the textured surface but the gentle curves of the radiused side flanges and the tube holder take this fender into the 21st century. Flip it over and see a whole new look. If that doesn't do it, the "Air Slipper Two" has grown to **25" wide** to increase tire coverage and deflect even more spray, stones and other debris. The "Air Slipper Two" Combo comes with white top flaps featuring the Fleet Engineers' logo and flap hardware.

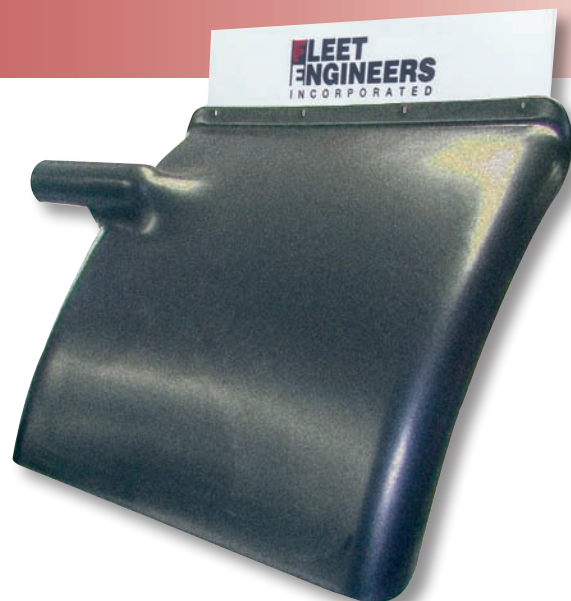


Air Slipper "TWO" - without Top Flaps

| part no. | weight (lbs.) | construction | top flap hdw. |
|-----------|---------------|---------------|---------------|
| 031-00406 | 16.80 | black plastic | - |

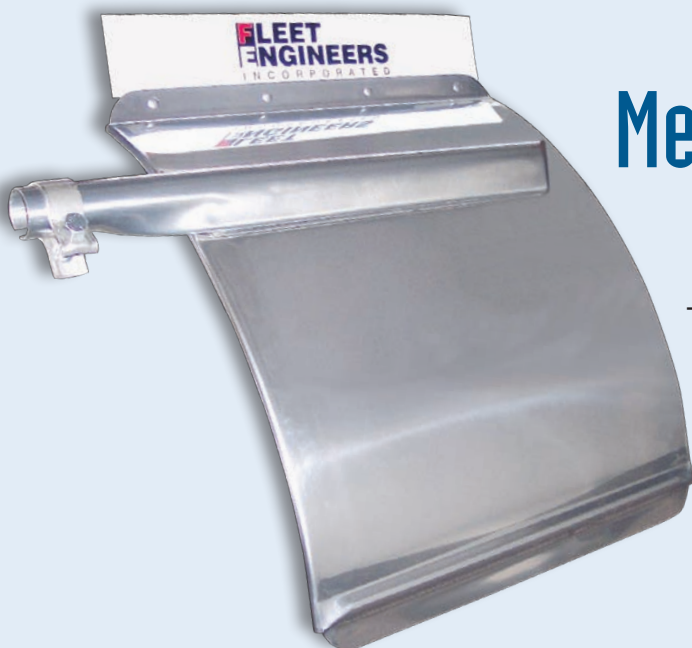
Air Slipper "TWO" Combo - with Fleet Engineers Top Flaps

| part no. | weight (lbs.) | construction | top flap hardware |
|-----------|---------------|---------------|-------------------|
| 031-00924 | 18.00 | black plastic | zinc hardware |



details

- Each fender set includes one right and one left fender assembly with hanger clamps and all installation hardware
- Add top flaps - either black rubber or black or white poly blend with or without a logo
- Air Slipper is a Full 24" x 24" fender size; Air Slipper TWO is a larger 24" x 25" fender size
- Universal fitting
- Each fender is pre-assembled for speedy installation
- Patented design

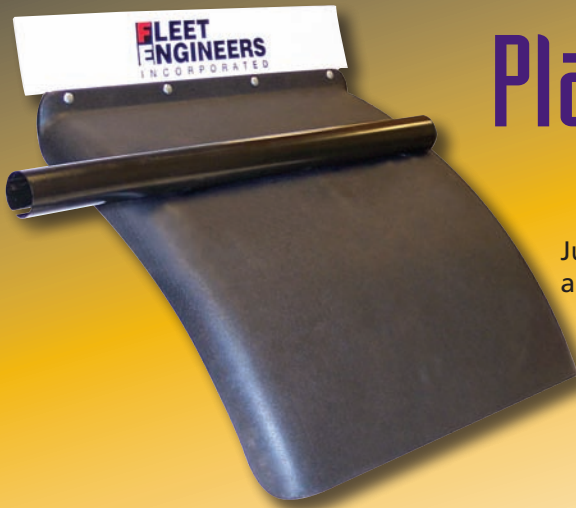


29 Inch Metal "STANDARD" Triangle Mount

**Expanded
Size!**

The Triangle Mount is gaining in popularity so we decided to put it on our new 29" Standard Fender. The Triangle Mount design features an all-welded end cap for a superior look and the hidden mounting bolts result in a clean, uncluttered appearance. The fender, at a full 29 inches, covers more of the tire, resulting in greater spray suppression and less flying debris. The 29 inch "Standard" with Triangle Mount comes with white top flaps featuring the Fleet Engineers' logo and all flap hardware.

| part no. | weight (lbs.) | construction | top flap hardware |
|-----------|---------------|------------------------|-------------------|
| 031-00537 | 33.10 | 18 gauge polished s.s. | s.s. hardware |



Plastic STANDARD Quarter Fender

Just like our Standard Metal Quarter Fenders that appeal to some, there are also those who prefer the same look in a plastic fender. With that in mind, we have added the Standard Black Plastic Quarter Fender to our line-up. As with the Metal Standard, a flattened tube design is used for strength and durability. The fender itself has a textured surface which reduces scratches and dings. Overall size is 24.00" x 24.00".

| part no. | weight (lbs.) | construction | top flap hardware | cross reference |
|-----------|---------------|---------------|-------------------|--------------------------|
| 031-01636 | 18.30 | black plastic | zinc hardware | 1900-KIT, 203000, 5060-2 |

Metal STANDARD Quarter Fender

The traditional look of the Fleet Engineer's "Standard" Fender is one of the most popular styles of fenders on the road today. However, we've taken the "style" one step further and improved on it, making it extremely durable and attractive. Our "Standard" fender has a flattened tube design which requires no cradle or braces and uses hidden mounting bolts to create a clean, uncluttered appearance. And, the reinforcement strap on the underside of fender adds to its overall strength. All of these features make the "Standard" fender very hard to overlook. Overall size is 24.00" x 24.00".



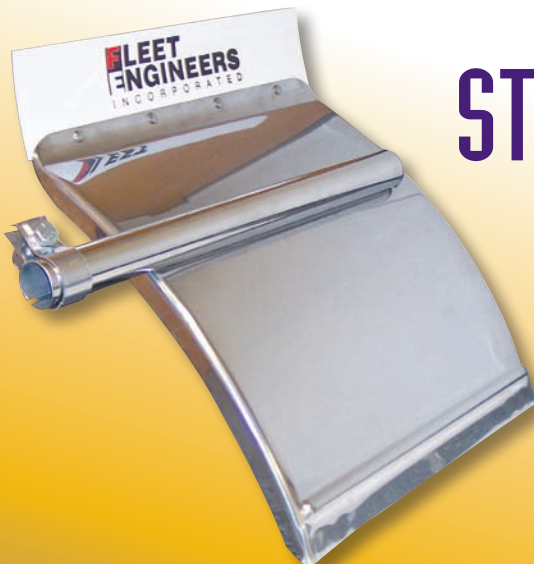
| part no. | weight (lbs.) | construction | top flap hardware | cross reference |
|-----------|---------------|-----------------------------|-------------------|--------------------------------------|
| 031-01070 | 29.38 | 18 gauge polished s.s. | s.s. hdw | 1585B-KIT, N100SSNM, SS100B2, 523000 |
| 031-01071 | 31.01 | 18 gauge black primed steel | zinc hdw | 1590B-KIT, N123SPNM, SP100B2, 503000 |
| 031-01072 | 21.99 | 16 gauge aluminum | s.s. hdw | 1580B-KIT, SA100B2 |

details

- Each Standard Fender Packaged Set includes one right and one left fender with hanger clamps and hardware PLUS white top flaps featuring the red and black Fleet Engineers logo and top flap hardware
- Flattened tube design requires no cradle or braces
- Attractive black plastic end caps.
- Hidden mounting bolts create a clean, uncluttered appearance
- Full 24.00" x 24.00" fender size (21.00" x 24.00" available for 19.5" wheels)
- Pre-assembled for speedy installation

STANDARD Quarter Fender For 19.5" WHEELS

This Standard Quarter Fender is designed to fit 19.5" wheels but it has all the same great features as the 24.00" including a flattened tube design which requires no cradle or braces and uses hidden mounting bolts to create a clean, uncluttered appearance with a reinforcement strap on the underside of fender to add to its overall strength. Overall size is 21.00" x 24.00".



| part no. | weight (lbs.) | construction | top flap hardware | cross reference |
|-----------|---------------|------------------------|-------------------|-----------------|
| 031-01635 | 24.50 | 18 gauge polished s.s. | s.s. hardware | 2105 |

Need More Overhead Clearance?



Low Mount STANDARD Quarter Fender

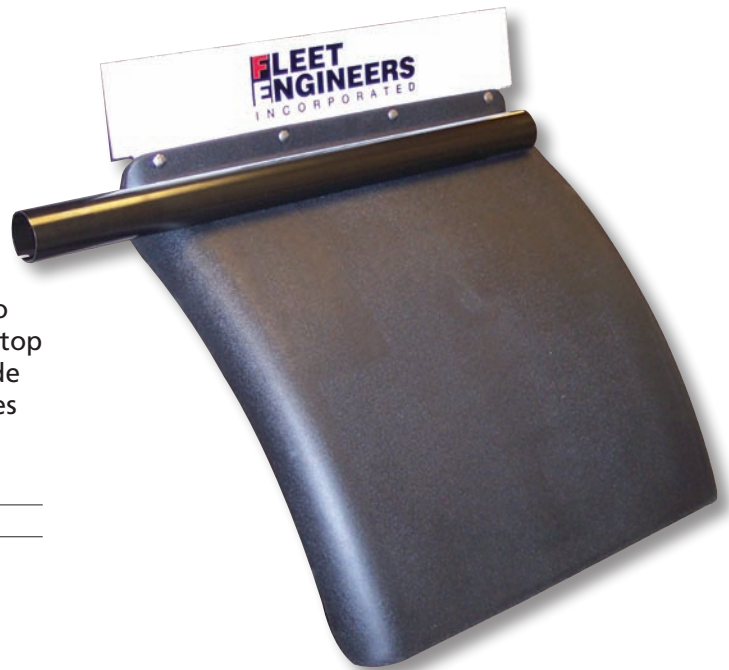
If more overhead clearance is needed to mount your fender then this is the one to use. The Low Mount Standard Fender is designed to provide ample space between the top of the quarter fender, top flap and the underside of the trailer, but yet durable enough to withstand the roughest roads. The tube design requires no cradle and the fender is pre-assembled for speedy installation.

| part no. | weight (lbs.) | construction | top flap hardware | cross reference |
|-----------|---------------|------------------------|-------------------|-----------------|
| 031-01074 | 29.73 | 18 gauge polished s.s. | s.s. hardware | 1585LM-KIT |
| 031-01092 | 23.00 | 16 gauge aluminum | s.s. hardware | 1580LM-KIT |

Low Mount PLASTIC STANDARD Quarter Fender

Like the Metal Low Mount Standard Fender, this one also provides plenty of space between the top of the fender, top flap and the underside of the trailer, but THIS one is made of a textured black plastic surface which reduces scratches and dings and is lighter than the metal fenders.

| part no. | weight (lbs.) | construction | top flap hardware |
|-----------|---------------|---------------|-------------------|
| 031-01637 | 18.30 | black plastic | zinc hardware |



details

- Each Low Mount Standard Fender Packaged Set includes one right and one left fender with hanger clamps and hardware PLUS white top flaps featuring the red and black Fleet Engineers logo and top flap hardware
- Low Mount Standard Fender uses a round tube
- Flattened tube design requires no cradle or braces
- Attractive black plastic end caps.
- Hidden mounting bolts create a clean, uncluttered appearance
- Full 24.00" x 24.00" fender size
- Pre-assembled for speedy installation

**For more information
on fenders or any of our
products visit our website:
www.fleetengineers.com**

Fleet Engineers offers four types of quarter fender mounting kits which means virtually any type of truck can be equipped with a quarter fender.

Put An End To Your Mounting Frustrations!

The PivotBar® ends the frustration that sometimes goes along with mounting quarter fenders and tandem fenders. With the PivotBar®, the installer has the ability to adjust the fender to the proper position without drilling new holes in the frame. Now, mounting a fender is as simple as rotating the PivotBar® to the desired position and tightening the bolt.

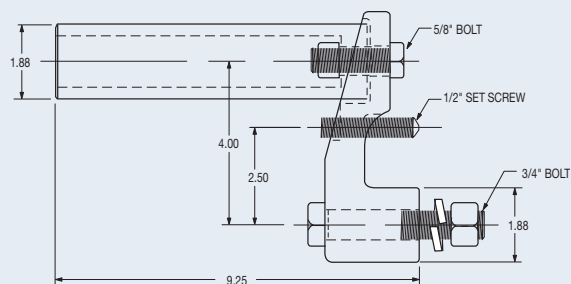
| part no. | weight (lbs.) | description |
|-----------|---------------|---|
| 031-01586 | 5.79 | standard Pivot Bar set |
| 031-01587 | 10.91 | complete Pivot Bar set (includes post mounts) |



patent # 6,471,228

details

- Can be used with most brands of quarter fenders
- Stout casting with black e-coat finish
- Offset of 4.00" with 360° rotation
- Complete set includes two adapters, adapter to chassis hardware, two jamming screws, two post mounts and adapter to post mount hardware
- Standard set includes two adapters, adapter to chassis hardware and two jamming screws

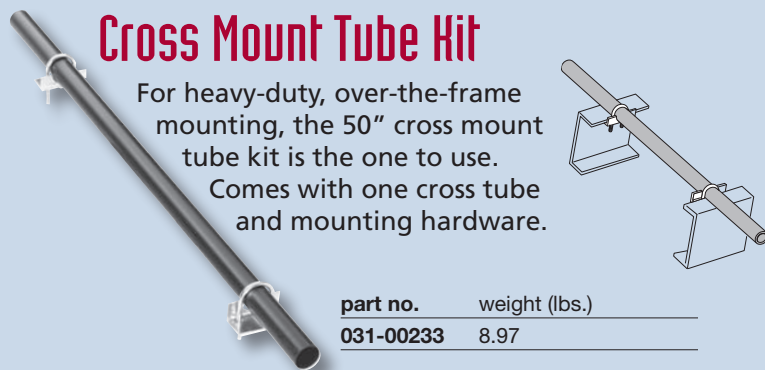


Traditional Mounts

Cross Mount Tube Kit

For heavy-duty, over-the-frame mounting, the 50" cross mount tube kit is the one to use. Comes with one cross tube and mounting hardware.

| part no. | weight (lbs.) |
|-----------|---------------|
| 031-00233 | 8.97 |

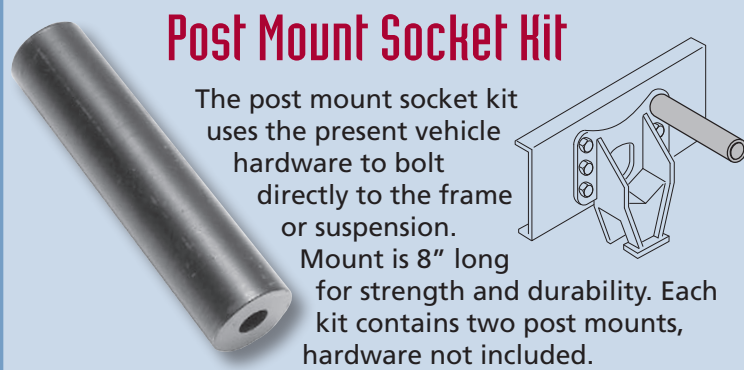


Post Mount Socket Kit

The post mount socket kit uses the present vehicle hardware to bolt directly to the frame or suspension.

Mount is 8" long for strength and durability. Each kit contains two post mounts, hardware not included.

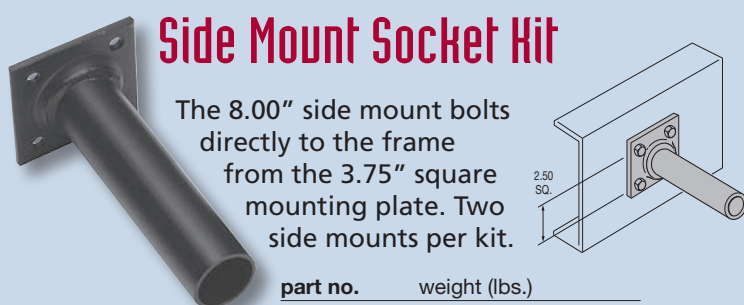
| part no. | weight (lbs.) |
|-----------|---------------|
| 031-00235 | 4.00 |



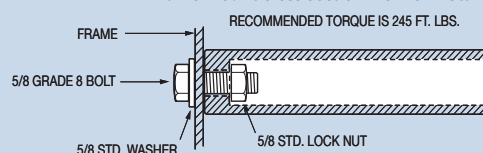
Side Mount Socket Kit

The 8.00" side mount bolts directly to the frame from the 3.75" square mounting plate. Two side mounts per kit.

| part no. | weight (lbs.) |
|-----------|---------------|
| 031-00234 | 5.00 |



Frame mount cross section view of installation.



Call a Fleet Engineers Customer Service Representative for assistance with mounting questions 1-800-333-7890



OEM Quarter Fenders

Same great features and qualities as our regular polished stainless steel Air Slipper but with your favorite OEM logo. Choose from six different logos.

OEM Top Flaps

A top flap makes your quarter fender complete. Choose the plain flap, either in black or white or jazz it up with one of eight OEM logos. Comes with either stainless steel or zinc plated hardware - your choice. Top flaps can also be individually customized with your company logo or artwork. See the Fleet Engineers Product Catalog for ordering and artwork instructions.

OEM Logo/Custom Ordering Information

OEM Logo "Air Slipper" Quarter Fenders

| part no. | weight (lbs.) | description |
|-----------|---------------|---------------|
| 031-00421 | 33.20 | International |
| 031-00422 | 33.20 | Freightliner |
| 031-00423 | 33.20 | Peterbilt |
| 031-00426 | 33.20 | Kenworth |
| 031-00439 | 33.20 | Volvo |
| 031-00440 | 33.20 | Mack |

OEM Logo Poly Top Flaps (set includes two flaps & hardware)

| set part no. | set weight (lbs.) | description | hardware construction | flap color | logo color |
|--------------|-------------------|---------------|-----------------------|------------|------------|
| 031-00304 | 1.20 | Freightliner | stainless steel | white | black |
| 031-00305 | 1.20 | Peterbilt | stainless steel | white | red |
| 031-00306 | 1.20 | International | stainless steel | white | black |
| 031-00309 | 1.20 | Kenworth | stainless steel | white | red |
| 031-00931 | 1.20 | Volvo | stainless steel | white | blue |
| 031-00962 | 1.20 | Mack | stainless steel | white | black |
| 031-00964 | 1.20 | Mack | stainless steel | black | gray |
| 031-00245 | 1.20 | Freightliner | zinc plated steel | white | black |
| 031-00246 | 1.20 | Peterbilt | zinc plated steel | white | red |
| 031-00247 | 1.20 | International | zinc plated steel | white | black |
| 031-00250 | 1.20 | Kenworth | zinc plated steel | white | red |
| 031-00932 | 1.20 | Volvo | zinc plated steel | white | blue |
| 031-00961 | 1.20 | Mack | zinc plated steel | white | black |
| 031-00963 | 1.20 | Mack | zinc plated steel | black | gray |

Plain Top Flaps (set includes two flaps & hardware)

| set part no. | set weight (lbs.) | description | hardware construction | flap color |
|--------------|-------------------|------------------|-----------------------|------------|
| 031-00301 | 3.70 | plain rubber | stainless steel | black |
| 031-00311 | 1.20 | plain poly blend | stainless steel | white |
| 031-00320 | 1.20 | plain poly blend | stainless steel | black |
| 031-00242 | 3.70 | plain rubber | zinc plated steel | black |
| 031-00252 | 1.20 | plain poly blend | zinc plated steel | white |
| 031-00261 | 1.20 | plain poly blend | zinc plated steel | black |

Customized Poly Flaps

See the Fleet Engineers' Product Catalog or call 1-800-333-7890

fender details

- Each fender set includes one right and one left fender assembly with hanger clamps and all installation hardware
- Full 24" x 24" fender size
- Universal fitting
- Each fender is pre-assembled for speedy installation
- Patented design
- OEM logo quarter fenders available only through respective dealers

flap details

- Each top flap set includes two flaps and flap hardware set
- Top flaps available in plain black or white poly with or without a logo or black rubber
- Poly top flaps made of .12" thick durable material
- Mylar hot stamping process assures long life of lettering and trademarks on custom and logo top flaps
- Your choice of stainless or zinc plated steel mounting hardware for top flaps - each hardware set includes eight nuts, eight bolts, and eight washers
- OEM logo quarter fenders and top flaps available only through respective dealers
- Can be customized with your own company logo or artwork



SPRAY MASTER



**The First and Only
Half Tandem &
Double Radius
Injection Molded
Fenders In The World.**

Contact our Sales Department or visit
www.FleetEngineers.com to order a brochure



Call or visit our website at www.fleetengineers.com to receive literature on other Fleet Engineers products or a complete Product Catalog with photos, specifications and descriptions of all the 1500+ parts we manufacture.

Literature Available:

- ▶ Product Catalog
- ▶ Product Catalog on CD
- ▶ Mud Flap Product Guide
- ▶ Roll-Up Door Brochure
- ▶ Fairing Brochure
- ▶ PolyTrak Brochure
- ▶ Spray Master Brochure
- ▶ Spray Master Tandem & Double Radius Brochure
- ▶ Cargo Control Brochure
- ▶ Hinge Brochure
- ▶ Hinge/Roll-up Door Poster



Fleet Engineers' has solutions to all your fender needs.

To receive literature on Tandem Fenders, Spray Mate Fenders or the X-FLEX line, visit our website www.fleetengineers.com or call 1-800-333-7890.



DISTRIBUTED BY:

FLEET ENGINEERS
INCORPORATED

1800 E. Keating • Muskegon, Michigan 49442 • USA

Phone: 1-800-333-7890 or 1-231-777-2537

8:00 a.m. - 5:00 p.m. EST

FAX: 231-777-2720 (24 hours)

LIT-01049 • 5/02 • REV. B 12/03 • REV. C 5/05 • REV. D 9/06 • REV. E 1/08
REV. F 7/09