

Aluminum Products



A subsidiary of Miner Enterprises, Inc.

Lockrods

Available in Three Buying Options

Whether you manufacture large vans or speciality trailers, repair trailers in the shop or in the field or occasionally fabricate a lockrod on the fly, Powerbrace has you covered with more options and better solutions.

Proper Timing

Factory controlled specifications maintain smooth operation.

Snap-in Acetal Bearings

Snap-in Acetal anti-seize bushings create a continually smooth glide action when swing doors are opened and closed.



6061 Grade Aluminum

All components and tubing are Schedule 80, 6061, T6 Grade. Assures strong welds with no porosity at the weld points.

Forged Aluminum Cams

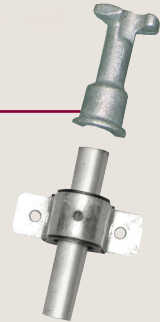
Superior strength, unlike cast cams, which are prone to breaking and cracking.

1. Custom Manufactured

Factory-assembled lockrod built to your exact specifications with both cams and riveted-handle assembly factory-welded. Just add mounting hardware.

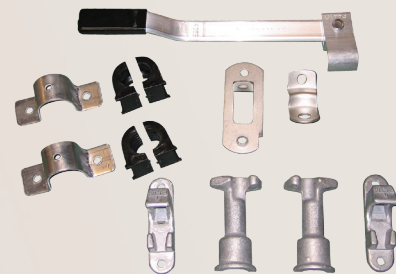
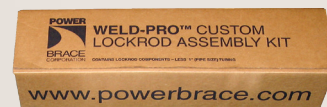
2. Top-end Loose (TEL)

Manufactured lockrod with bottom cam and riveted-handle assembly factory-welded in place. Simply cut length to fit, weld on top cam and mount with hardware kit.



3. Assembly Kit

Our lockrod assembly kits include all components needed to build one lockrod. Tubing sold separately.



Hinges

Glide-Pro™ Extruded Aluminum

Glide-Pro™ Hinges are proven to reduce wear and protect doors better than conventional hinge assemblies because the patented bearings keep metal parts from touching. No wear due to metal-to-metal contact. No frozen doors due to rusting or sticking, as with conventional steel hinges. And since there is no dissimilar metal contact, our extruded aluminum hinges provide superior corrosion resistance.

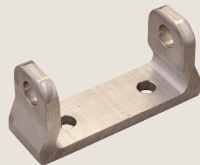
Powerbrace offers a variety of aluminum hinge products, whether for large vans, specialty trailers or truck body applications. Choose from conventional style hinge blade offerings, our innovative lift-off hinge or our three-piece models for light-duty applications.

Extruded aluminum hinges offer superior performance and will outlast the life of your trailer. They are available in a variety of sizes, finishes and bolt patterns including:

- 4 and 2¾-inch sizes
- Bolt patterns of both 3 and 4-holes
- Plain, anodized and electropolished finishes

Bolt-on Butt

The extruded aluminum bolt-on butt fits all 2¾" extruded aluminum hinges and is available in offsets of 1¾", 1½", 1¼" and 2¼".



4" x 9 1/2"
Glide-Pro™ Hinge
Electropolished finish



2 3/4" x 8 1/2"
Glide-Pro™ Hinge



Lift-off Hinge

Lift-off Hinge leaves are constructed of 6061 aluminum for the perfect balance of strength, light weight and corrosion resistance. The steel pivot pin is coated with a thermosetting modified acrylic to provide long-term corrosion protection and wear resistance. They are ideal for smaller swing door or tool box applications and allow you to lift the door off the hinge with ease.



Three-piece Hinge

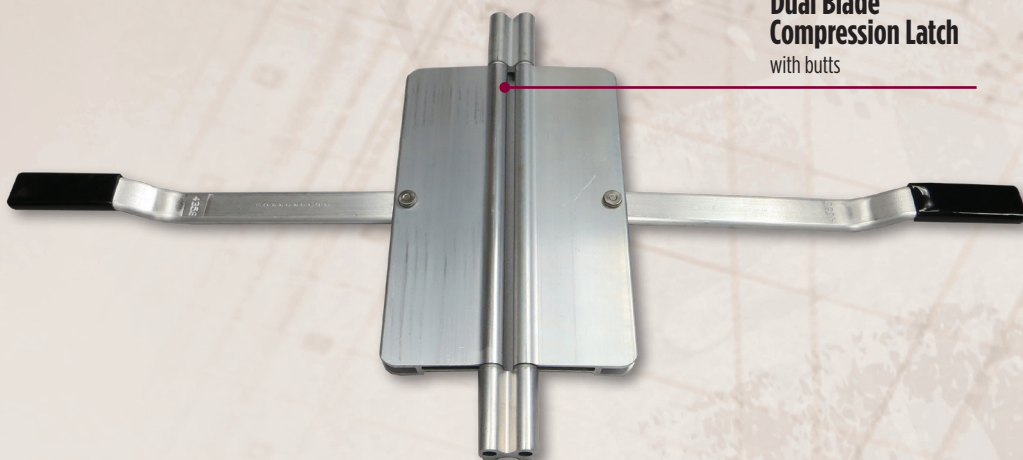
Three-piece Hinges are very secure. Once bolted to frame, pins cannot be removed because of a flange between the leaves. The pin cannot be unscrewed or pounded out and they are also corrosion resistant due to thermosetting modified acrylic coating. Constructed of 6061 aluminum, these hinges are both light weight and very strong.

Compression Latches

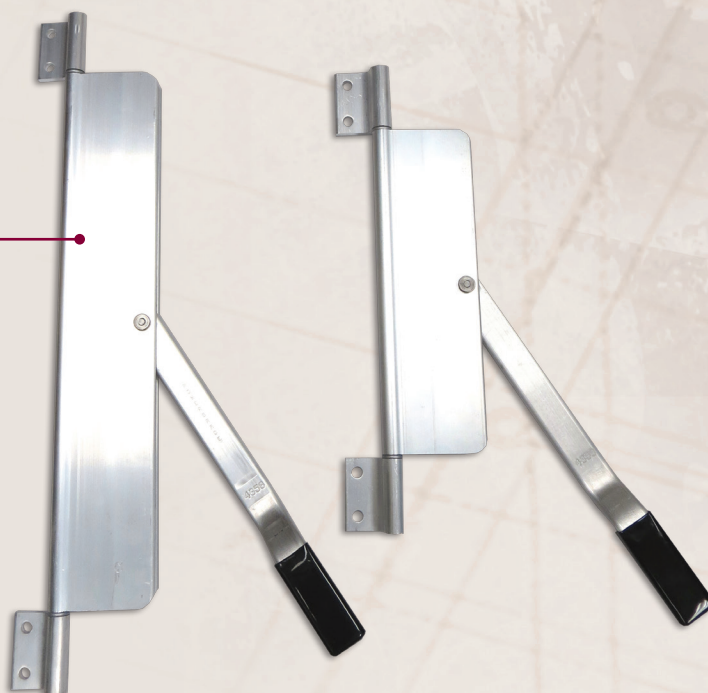
Custom Manufactured

Patented Powerbrace Compression Latches are stronger, more stylish latches designed especially for horse, stock, utility, swing and ramp door applications. They are made from one piece of extruded aluminum for maximum strength and clean lines. There are no welds, no joints and fewer parts than typical latches.

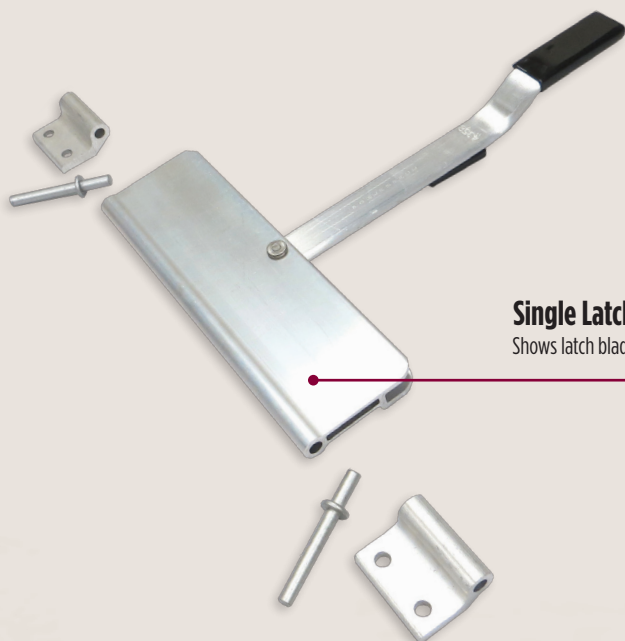
Dual Blade Compression Latch
with butts



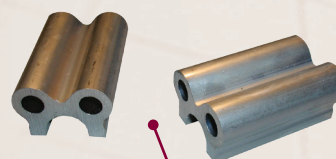
Single Blade Compression Latch
with butts



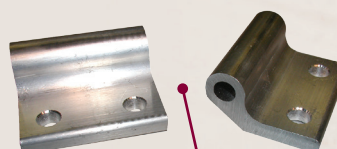
Single Latch Option
Shows latch blade and assembly parts.



Dual Blade Butts
Weld-on P43611



Single Blade Butts
Bolt-on P43561



- Compression Latches are available in stocking lengths of 12" and 20". Non-standard lengths available by special order.

Why Aluminum?

As part of our commitment to offer more options and better solutions for your trailer manufacturing and repair needs, Powerbrace manufactures an extensive line of aluminum products. Aluminum products offer three key benefits to you:

High-end Appearance

Aluminum offers a better looking finish than galvanized steel, and it can be optionally electropolished for a bright finish. This option gives the look of polished stainless steel at a fraction of the cost.

Better Corrosion Resistance

Aluminum maintains its appearance longer because it will not rust like steel. Aluminum also has a lower potential for corrosion than steel.

Strength and Light Weight

Aluminum offers a superior strength-to-weight ratio, especially for medium-duty applications. For example, our forged aluminum lockrod cams provide superior strength unlike commonly used cast cams which are prone to breaking and cracking.



About Powerbrace Corporation

You can count on Powerbrace to solve almost any door closure challenge!

Customers are often surprised to learn just how many door securement alternatives we have to offer. For over five decades, Powerbrace Corporation has been the premier manufacturer of heavy-duty door securement products for the truck-trailer, intermodal, specialty and truck body market segments.

Our products include custom factory-welded lockrods, lockrod assembly kits, steel, aluminum and polymer hinges, lockrod repair parts and an expansive offering of aluminum products, including lockrods, compression latches and hinges.

Powerbrace Corporation manufactures and markets its products direct to Trailer Manufacturers (OEMs) and Authorized Aftermarket Distributors.

Powerbrace Corporation operates a Quality Management System which complies with ISO 9001:2015 requirements for the design, manufacture and distribution of trailer hardware and associated components.

Questions or concerns? Call Powerbrace at 262.694.3202
or visit **Powerbrace.com**

**More Options,
Better Solutions**



A subsidiary of Miner Enterprises, Inc.